

FAG PowerTherm HEATER

Technical data

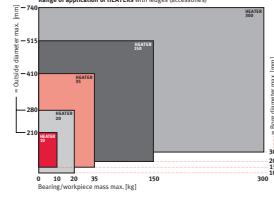
PowerTherm	HEATER 10	HEATER 20	HEATER 35	HEATER 150	HEATER 300
Power consumption max. [kVA]	2,3	5,5	5,5	12,8	12,8
Voltage / frequency* [V/Hz]	230/50	230/50	230/50	400/50	400/50
Current [A]	10	16	16	33	33
Temperature display [°C]	50...240	50...240	50...240	50...240	50...240
Mass [kg]	7	17	31	55	127
Length [mm]	230	345	420	505	700
Width [mm]	200	200	260	260	500
Height [mm]	240	240	340	440	530
Ledge(s) W x H x L [mm]	10 x 10 x 25 25 x 25 x 40 40 x 40 x 55	14 x 14 x 200 25 x 25 x 200 40 x 40 x 200	10 x 50 x 230	20 x 70 x 350	80 x 80 x 400
Workpiece mass max. [kg]	10	20	35	150 (horizontal only)	300 (horizontal only)
Ledges (incl. max. height) [mm]	7 x 7 x 200 10 x 10 x 200 20 x 20 x 200	14 x 14 x 230 25 x 25 x 230 40 x 40 x 230	14 x 14 x 350 20 x 20 x 350 30 x 30 x 350	14 x 14 x 350 20 x 20 x 350 30 x 30 x 350	30 x 30 x 400 40 x 40 x 400 60 x 60 x 400

The right heating device for each application!

Five desktop induction heating devices, for mobile and/or fixed use, make it easier to mount workpieces weighing up to 300 kg. FAG will assist you to incorporate them into your production process.

Extremely powerful fixed devices are available for workpieces weighing 300 to 3,000 kg.

We will be happy to quote you on your specific application!



FAG PowerTherm HEATER.PLATE

The alternative

HEATER.PLATE

Favourably priced electric heating plate for heating small rolling bearings and small machine elements (e.g. sealing rings).

- uniform, clean heating under protective cover
- no maintenance required
- continuous temperature adjustment between 50 and 200 °C
- easy operation
- suitable for rolling bearings as well as labyrinth rings, shrink on rings and sealing rings

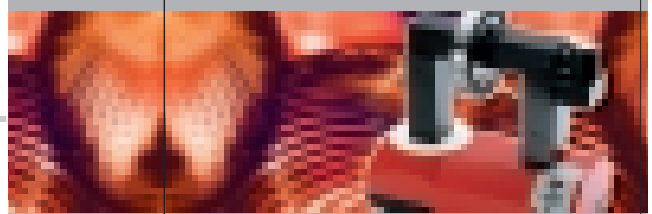
- #### The Benefits
- an affordable price
 - no maintenance required
 - clean, environmentally friendly heating (no oil, and therefore no disposal cost)
 - easy and safe operation

The FAG PowerTherm HEATER makes your mounting work easier and prevents damage!

Technical data

Power consumption max.	1,500 W
Voltage / frequency	230 V / 50 Hz *
Heating range	50 - 200 °C *
Heating precision	< ± 0,1 °C
Plate dimensions (W x D)	180 x 380 mm
Protective cover height	60 mm
Dimensions (D x H)	300 x 270 x 156 mm
Mass	5,6 kg
Length of the connecting cable	2,20 m
Workpiece mass	max. 5 kg

* also available for 110 V / 60 Hz



FAG Kugelfischer AG
Georg-Schäfer-Strasse 30
97421 Schweinfurt
Germany
Tel: +49 (0) 2407 - 01 49 99
Fax: +49 (0) 2407 - 91 49 59
E-Mail: support@fs-services.de
www.fs-services.de

FAG PowerTherm HEATER HEATER.PLATE

Desk top devices for heating rotationally symmetric parts

Every care has been taken to ensure the correctness of the information contained in this publication but no liability can be accepted for any errors or omissions. We reserve the right to make changes to the content of this publication without notice.

© FAG 2005
This publication or parts thereof may not be reproduced without our permission.

FS 101/05 Product Literature
FS 101/05/01

A company of the Schaeffler Group

FAG PowerTherm HEATER

Correct mounting helps timely prevention of damage

Heating?

Many rolling bearings and other rotationally symmetric steel parts are tightly fitted onto the shaft. Larger parts in particular, can be fitted more easily if they are pre-heated (rolling bearings up to a maximum of 200 °C).

FAG PowerTherm HEATERS

- heat parts uniformly and prevent harmful temperature differences
- work faster and are cleaner than traditional heating methods
- heat parts (micro processor controlled) to the selected temperature
- demagnetise rolling bearing steels automatically

- #### The Benefits
- energy efficient, clean and environmentally friendly (no oil, and therefore no disposal cost)
 - extremely cost effective
 - workpieces positioned horizontally save approx. 50% of time, due to increased efficiency*
 - reduced mounting times
 - easy operation
 - demagnetised and stress-relieved workpieces
 - highly adaptable as several different ledges can be used with the apparatus
 - no maintenance costs
 - micro processor controlled
 - protective gloves and magnetic heater included
 - three years guarantee

HEATER 10

Handy, mobile device for heating small rolling bearings or other rotationally symmetric parts. Ideal for maintenance work in cars and in electrical machines.

- parts of up to 10 kg
- bore diameters from 15 mm upwards
- easy operation
- weights only 7 kg
- convenient carry case for mobile use



HEATER 20

Mobile heating device for small rotationally symmetric parts and bearings.

- parts of up to 20 kg
- bore diameters from 20 mm upwards
- easy operation
- weights only 17 kg
- desk top device with sturdy, handy protective transport cover



HEATER: Uniform, stress-relieved induction heating



HEATER 150

Fixed heating device with ledge. Workpieces can be positioned vertically or horizontally.

- parts of up to 150 kg
- bore diameters from 20 mm upwards
- ledge simplifies mounting parts on heater
- rotationally positioned workpieces save time
- 400 Volt technology



HEATER 35

For professional mounting work in maintenance workshops and in the production sector. The ledge makes the device easier to operate and simplifies work.

- parts of up to 35 kg
- bore diameters from 25 mm upwards
- for fixed use

HEATER: Fast, safe induction heating



HEATER 300

Desk top device for heating very heavy workpieces in horizontal or vertical position. A separate trolley with tray for storing ledges is available for transporting the heating device.

- parts of up to 300 kg
- bore diameters from 30 mm upwards
- ledge workpieces can be mounted on the ledge more easily and in less time
- 400 Volt technology

Function

The heart of the induction HEATER is a current-carrying coil with an iron core (primary coil), that generates a high induction current at a low voltage. In a short-circuited secondary circuit (rolling bearings, other steel components), the part for mounting is heated quickly; whilst non-magnetic parts and the device itself remain cool.

FAG



**FAG PowerTherm
HEATER
HEATER.PLATE**

**Desk top devices for heating
rotationally symmetric parts**

A company of the
Schaeffler Group

FAG PowerTherm HEATER

Correct mounting helps timely prevention of damage

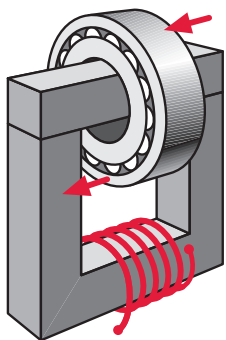


Heating?

Many rolling bearings and other rotationally symmetric steel parts are tightly fitted onto the shaft. Larger parts in particular, can be fitted more easily if they are pre-heated (rolling bearings up to a maximum of 120 °C).

Induction heating?

Induction heating is superior to traditional methods – fast, clean – ideal for batch mounting. Complete bearings, rings of cylindrical roller bearings or needle roller bearings, as well as other rotationally symmetric steel parts such as labyrinth rings, roll couplings, tyres, etc. can be heated.



Function

The heart of the induction HEATER is a current-carrying coil with an iron core (primary coil), that generates a high induction current at a low voltage, in a short-cir-

cuit secondary circuit (rolling bearings, other steel components).

The part for mounting is heated quickly; whilst non-metallic parts and the device itself remain cool.

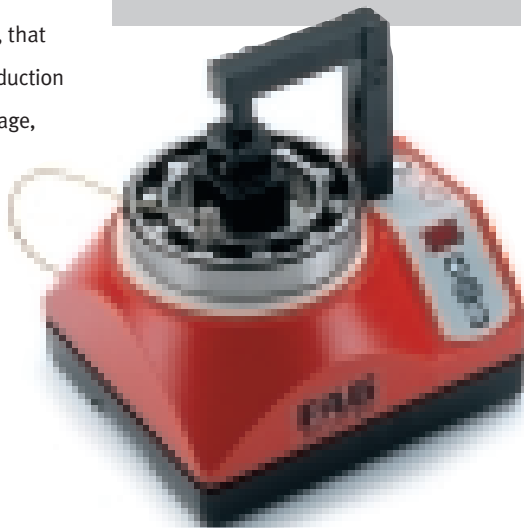
FAG PowerTherm HEATERS

- heat parts uniformly and prevent harmful temperature differences
- work faster and are cleaner than traditional heating methods
- heat parts (micro processor controlled) to the selected temperature
- demagnetise rolling bearing steels automatically

HEATER 10

Handy, mobile device for heating small rolling bearings or other rotationally symmetric parts. Ideal for maintenance work in cars and in electrical machines.

- parts of up to 10 kg
- bore diameters from 15 mm upwards
- easy operation
- weighs only 7 kg
- convenient carry case for mobile use



The Benefits

- energy efficient, clean and environmentally friendly (no oil, and therefore no disposal cost)
- extremely cost effective
- workpieces positioned horizontally save approx. 50% of time, due to increased efficiency*
- reduced mounting times
- easier operation
- demagnetised and stress-relieved workpieces
- highly adaptable as several different ledges can be used with the apparatus
- no maintenance costs
- micro processor controlled
- protective gloves and magnetic feeler included
- three years guarantee

* not recommended for bearings with narrow tolerances, e.g. C 2



HEATER 20

Mobile heating device for small rotationally symmetric parts and bearings.

- parts of up to 20 kg
- for bore diameters from 10 mm upwards
- easy operation
- weighs only 17 kg
- desk top device with sturdy, handy protective transport cover



HEATER:
Uniform,
stress-relieved
induction heating



HEATER 150

Fixed heating device with ledge. Workpieces can be positioned vertically or horizontally.

- parts of up to 150 kg
- bore diameters from 20 mm upwards
- ledge simplifies mounting parts on heater
- horizontally positioned workpieces save time
- 400 Volt technology

HEATER 35

For professional mounting work in maintenance workshops and in the production sector. The ledge makes the device easier to operate and simplifies work.

- parts of up to 35 kg
- bore diameters from 15 mm upwards
- for fixed use

HEATER:

**Fast,
safe
induction heating**

HEATER 300

Desk top device for heating very heavy workpieces in horizontal or vertical position.

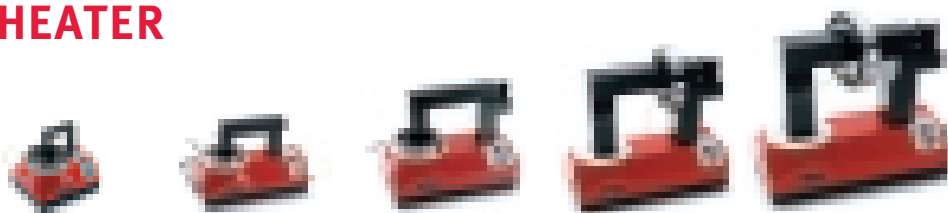
A separate trolley with tray for storing ledges is available for transporting the heating device.

- parts of up to 300 kg
- bore diameters from 30 mm upwards
- Ledge: workpieces can be mounted on the ledge more easily and in less time
- 400 Volt technology



FAG PowerTherm HEATER

Technical data



PowerTherm	HEATER 10	HEATER 20	HEATER 35	HEATER 150	HEATER 300
Power consumption max. [kVA]	2.2	3.5	3.5	12.8	12.8
Voltage / frequency*	230/50	230/50	230/50	400/50	400/50
Current [A]	10	16	16	32	32
Temperature display [°C]	50...240	50...240	50...240	50...240	50...240
Mass [kg]	7	17	31	51	127
Length [mm]	230	345	420	505	700
Width [mm]	200	200	260	260	500
Height [mm]	240	240	360	440	580
Ledge(s) W x H x L included in the delivery [mm]	10 x 10 x 25 ¹⁵ 25 x 25 x 40 ³⁵ 40 x 40 x 55 ⁶⁰	14 x 14 x 200 ²⁰ 25 x 25 x 200 ³⁵ 40 x 40 x 200 ⁶⁰	50 x 50 x 280 ⁷⁰	70 x 70 x 350 ¹⁰⁰	80 x 80 x 490 ¹¹⁵
 clear width w [mm] clear height h [mm]	65	120	180	210	390
	120	100	160	215	300
Workpiece mass max. [kg]	10	20	35	150 (horizontal only)	300 (horizontal only)
Ledges (accessories) WxHxL [mm]	–	7 x 7 x 200 ¹⁰ 10 x 10 x 200 ¹⁵ 30 x 30 x 200 ⁴⁵	10 x 10 x 280 ¹⁵ 14 x 14 x 280 ²⁰ 25 x 25 x 280 ³⁵ 30 x 30 x 280 ⁴⁵ 40 x 40 x 280 ⁶⁰	14 x 14 x 350 ²⁰ 20 x 20 x 350 ³⁰ 30 x 30 x 350 ⁴⁵ 40 x 40 x 350 ⁵⁵ 50 x 50 x 350 ⁷⁰ 60 x 60 x 350 ⁸⁵	20 x 20 x 490 ³⁰ 30 x 30 x 490 ⁴⁵ 40 x 40 x 490 ⁵⁵ 50 x 50 x 490 ⁷⁰ 60 x 60 x 490 ⁸⁵ 70 x 70 x 490 ¹⁰⁰

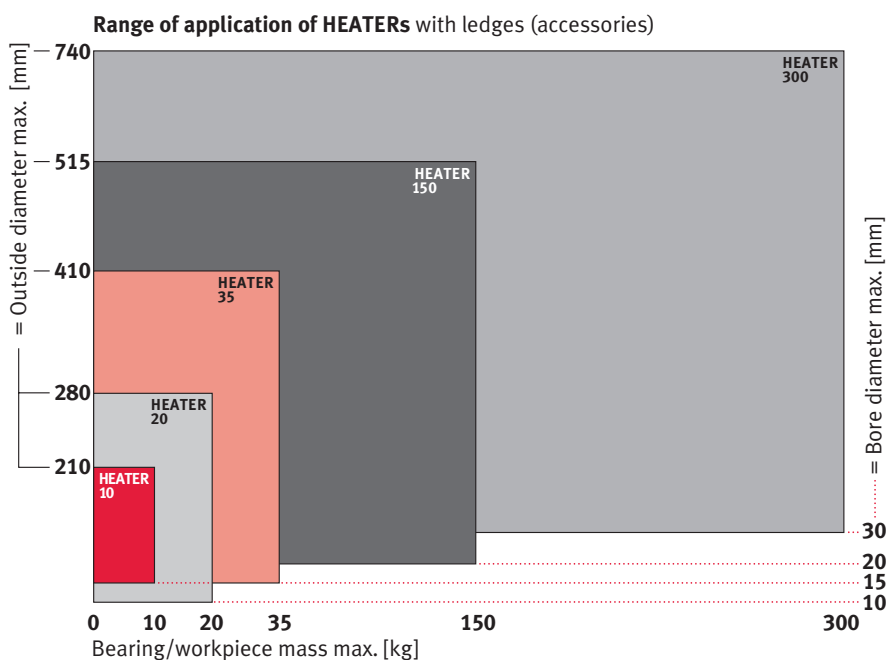
* other voltages/frequencies on request

⁰⁰ = Workpiece bore min. [mm]

The right heating device for each application!

Five desktop induction heating devices, for mobile and/or fixed use, make it easier to mount workpieces weighing up to 300 kg. FAG will assist you to incorporate them into your production process. Extremely powerful fixed devices are available for workpieces weighing 300 to 3,000 kg.

We will be happy to quote you on your specific application!



FAG PowerTherm HEATER.PLATE

The alternative

HEATER.PLATE

Favourably priced electric heating plate for heating small rolling bearings and small machine elements (e.g. sealing rings).

- uniform, clean heating under protective cover
- no maintenance required
- continuous temperature adjustment between 50 and 200 °C
- easy operation
- suitable for rolling bearings as well as labyrinth rings, shrink-on rings and sealing rings



The Benefits

- an affordable price
- no maintenance required
- clean, environmentally friendly heating (no oil, and therefore no disposal cost)
- easy and safe operation

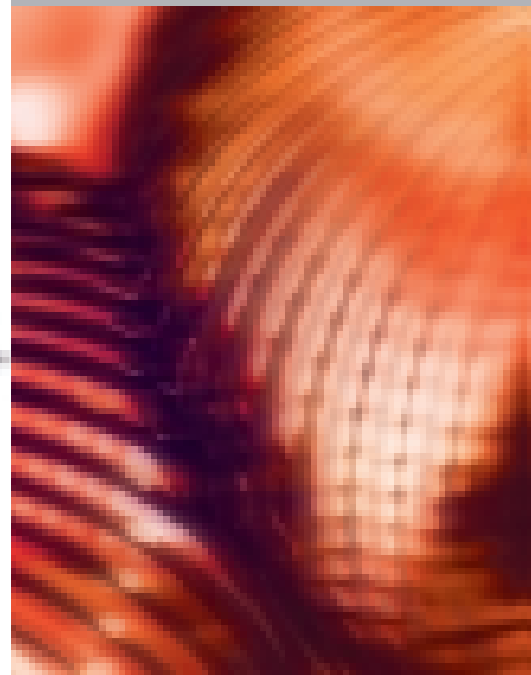
The FAG PowerTherm HEATER makes your mounting work easier and prevents damage!

Technical data

HEATER.PLATE

Power consumption max.	1,500 W
Voltage / frequency	230 V / 50 Hz *
Heating range	50 - 200 °C
Heating precision	< 10 °C
Plate dimensions (W x D)	180 x 380 mm
Protective cover height	60 mm
Dimensions (W x D x H)	390 x 270 x 156 mm
Mass	5.6 kg
Length of the connecting cable	2.20 m
Workpiece mass	max. 5 kg

* also available for 115 V / 60 Hz



FAG Kugelfischer AG

Georg-Schäfer-Straße 30
97421 Schweinfurt
Germany

Tel: +49-(0) 2407 - 91 49 99

Fax: +49-(0) 2407 - 91 49 59

E-Mail: support@fis-services.de
www.fis-services.de

Every care has been taken to ensure the correctness of the information contained in this publication but no liability can be accepted for any errors or omissions.

We reserve the right to make changes in the interest of technical progress.

© by FAG 2003

This publication or parts thereof may not be reproduced without our permission.

WL 80 343 EA